

HPC

This smart and flexible control solution combines the modularity of the popular Pro-C® Controller with the power of Hydrawise® Software.

Try Hydrawise Software today, hardware-free at hydrawise.com

KEY BENEFITS

- Number of stations:
 - Conventional wiring from 4 to 23 stations
 - Hybrid EZ Decoder option up to 32 total stations (28 stations maximum if two-wire only)
- Standard programming option allows for 6 independent irrigation programs and 6 start times per program
- 1 sensor input available for use with any Klik sensor or HC Flow Meter
- 1 P/MV output for pump start relay and master valve activation
- Wi-Fi enabled for quick connection to Hydrawise Software
- 2¾" full-color touchscreen display for Wi-Fi setup, zone testing, and offline programming at the control panel
- Built-in milliamp sensor for wire fault detection and alerts

OPERATING SPECIFICATIONS

- Transformer input: 120 VAC
- Transformer output (24 VAC): 1 A
- Controller maximum current draw: 0.8 A
- Station output (24 VAC): 0.56 A
- P/MV output (24 VAC): 0.28 A
- 2.4 GHz (only) Wi-Fi router compatible, 802.11 b/g/n 20 MHz
- Supported security protocols: WPA/WPA2 Personal (only) TLS, SSL
- Approvals: IP44 (outdoor), UL, cUL, FCC, CE, RCM, ISED
- Warranty period: 2 years

USER-INSTALLED OPTIONS

- Wireless HC Flow Meter option permits wireless flow monitoring for Hydrawise enabled systems



HPC
(plastic outdoor)
Height: 9"
Width: 10"
Depth: 4½"

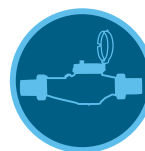


HPC Face Panel

HPC	
Model	Description
HPC-400	Modular 4-station base, plastic outdoor wall mount with plug
HPC-FP	Hydrawise retrofit face panel for Pro-C Controllers (March 2014 or newer models)

PC-SERIES STATION EXPANSION	
Model	Description
PCM-300	3-station plug-in module
PCM-900	9-station plug-in module
PCM-1600	16-station plug-in module
PC-DM	EZ Decoder output module

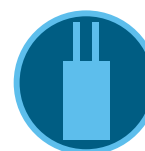
Compatible with:



HC Flow Meter



**ROAM Remote
ROAM XL Remote**



**EZ Decoder
System**



EPA WaterSense Approved

Recognized as a responsible water-saving tool by the U.S. Environmental Protection Agency